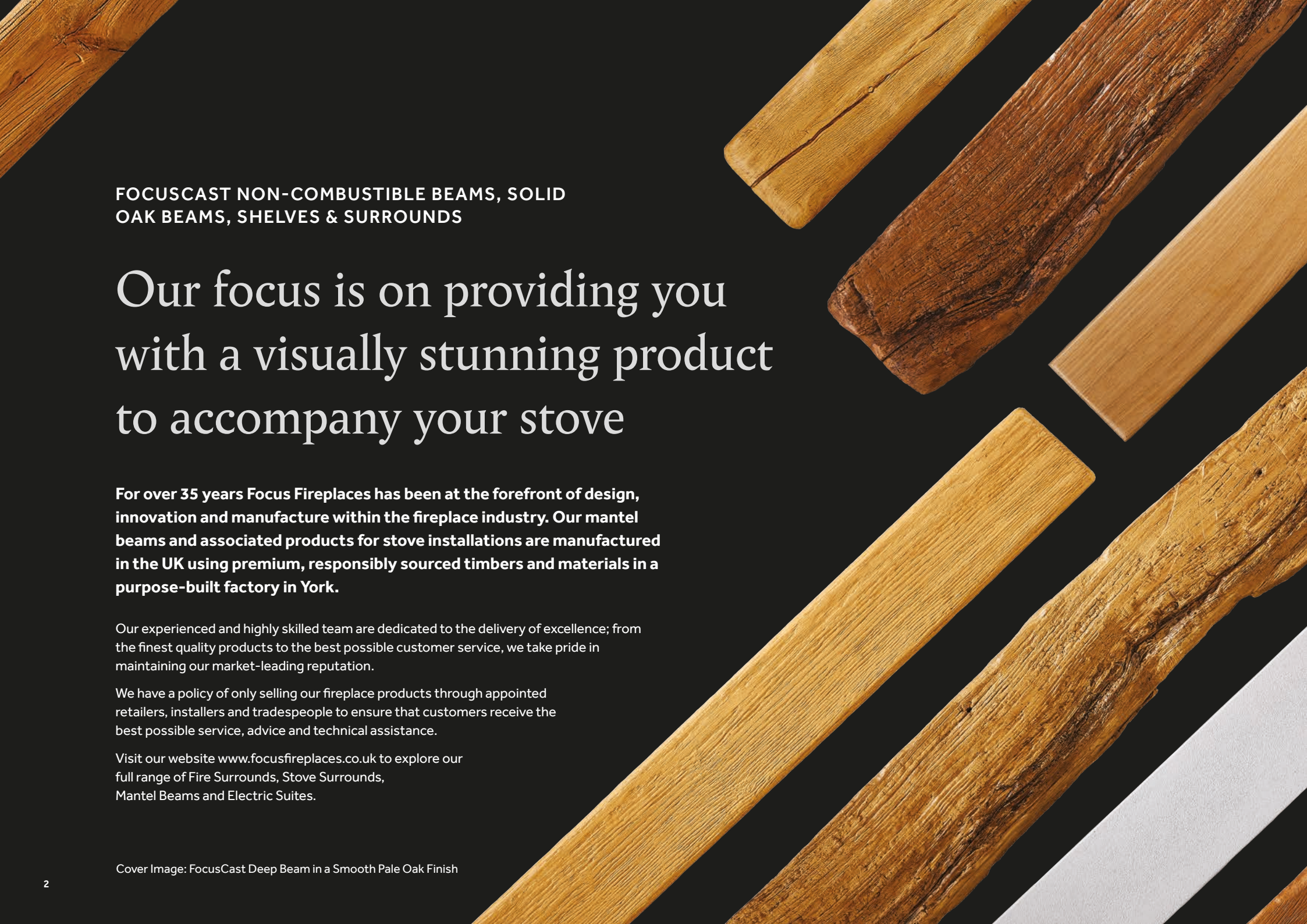


A photograph of a modern living room interior. In the center is a black wood-burning stove with a thick, light-colored wooden beam mantel. The stove is set into a grey stone fireplace surround. To the left of the stove is a wooden shelving unit with various decorative items, including a potted plant, a white lantern, and a small deer figurine. To the right of the stove is a light-colored armchair with a black metal frame. A floor lamp with a white shade and a tripod base stands next to the chair. A window in the background shows a view of a landscape. The text 'FOCUS ON BEAMS, SHELVES & SURROUNDS FOR STOVES.' is overlaid on the right side of the image in large, white, serif capital letters.

FOCUS ON BEAMS, SHELVES & SURROUNDS FOR STOVES.

STOVE BEAMS, SHELVES & SURROUNDS



FOCUSCAST NON-COMBUSTIBLE BEAMS, SOLID
OAK BEAMS, SHELVES & SURROUNDS

Our focus is on providing you with a visually stunning product to accompany your stove

For over 35 years Focus Fireplaces has been at the forefront of design, innovation and manufacture within the fireplace industry. Our mantel beams and associated products for stove installations are manufactured in the UK using premium, responsibly sourced timbers and materials in a purpose-built factory in York.

Our experienced and highly skilled team are dedicated to the delivery of excellence; from the finest quality products to the best possible customer service, we take pride in maintaining our market-leading reputation.

We have a policy of only selling our fireplace products through appointed retailers, installers and tradespeople to ensure that customers receive the best possible service, advice and technical assistance.

Visit our website www.focusfireplaces.co.uk to explore our full range of Fire Surrounds, Stove Surrounds, Mantel Beams and Electric Suites.

Cover Image: FocusCast Deep Beam in a Smooth Pale Oak Finish

CONTENTS

01 FOCUSCAST BEAM COLLECTION

- | | |
|----------------------------|----------------------------|
| 04 FocusCast Introduction | 12 Heritage Beams |
| 06 Character Beams | 14 Vintage Beams & Shelves |
| 08 Smooth Beams | 15 Portland Stone Beam |
| 10 York Large Fascia Beams | 15 Riva Decorative Beam |

02 FOCUSCAST STOVE SURROUND COLLECTION

- | | |
|---------------------------|----------------------------|
| 16 Jorvik Stove Surround | 18 Grantham Stove Surround |
| 17 Beamish Stove Surround | 19 Barlby Stove Surround |

03 SOLID OAK BEAM COLLECTION

- | | |
|---------------------------|---------------------------------|
| 20 Solid Oak Introduction | 26 Fascia Beams |
| 22 Deep Beams | 28 Solid Oak Shelves |
| 24 Large Beams | 29 Corbels & Decorative Shelves |

04 SOLID OAK STOVE SURROUND COLLECTION

- | | |
|--------------------------------|-----------------|
| 30 Stove Surround Introduction | 33 Sutton |
| 30 Beamish | 33 Blaydon |
| 31 Barlby | 34 Gatsby |
| 31 Barkston | 34 Plain Corbel |
| 32 Leicester | 35 Montreal |
| 32 Lichfield | |

05 FIXING SYSTEMS & ACCESSORIES

- | | |
|------------------------------|----------------------------|
| 36 Focus Easy-Fix | 37 Decorative Corner Trims |
| 36 Fascia Beam Fixing System | 38 Log Cabinets |
| 37 Decorative Heat Shields | 39 Solid Oak Beam Covers |

INTRODUCING NON-COMBUSTIBLE BEAMS

The appearance of real wood or stone with advanced fire-resistant performance.



A revolutionary range of fire-resistant mantel beams and stove surrounds, FocusCast products combine the charm of natural timber or stone with advanced non-combustible qualities.

Manufactured in the UK from a high-density mineral composite material, FocusCast products are moulded from a range of characterful natural materials and can be positioned closer to a stove than a real timber beam.* Hand painted using water based products, the FocusCast range is a truly realistic alternative to our natural timber products.

* Minimum clearances for non-combustible surrounds and beams:
250mm above the stove on a 5kW stove and 350mm on a 7kW stove

7 RANGES

CHARACTER



SMOOTH



YORK



VINTAGE



HERITAGE



STONE



RIVA



FOCUS EASY-FIX

Designed to make installation simple, the Focus Easy-fix bracket is supplied as standard with all FocusCast Beams & FocusCast Surrounds.

See page 36 for details.



5 BEAM SIZES

Upto 5 length options available (dependant on style/design)

36"
915mm

42"
1067mm

48"
1220mm

51"
1295mm

54"
1371mm



MANTLE BEAMS



▲ Above
FocusCast Vintage Shelf in a Honey Oak Finish

STOVE SURROUNDS

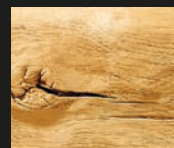


▲ Above
FocusCast Grantham in a Weathered Oak Finish

▲ Above
FocusCast Deep Beam in a Honey Oak Finish

5 COLOURS

PALE OAK



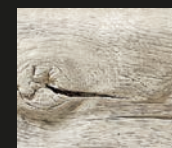
MID OAK



DARK OAK /
BURNT OAK



WEATHERED
OAK

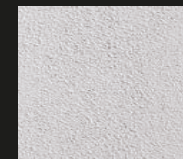


HONEY
OAK



SPECIAL COLOURS

PORTLAND
STONE



COLOUR
MATCH PAINT



FOCUSCAST
NON-COMBUSTIBLE
BEAMS

CHARACTER BEAM RANGE

With distressed edges and a textured surface displaying the cracks, deep grain and knots of a characterful oak beam.

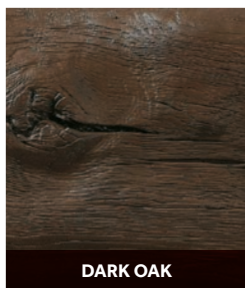
AVAILABLE COLOURS



PALE OAK



MID OAK



DARK OAK



WEATHERED OAK



HONEY OAK



▲ Above
FocusCast Character Deep Beam in a Mid Oak Finish

CHARACTER RANGE AVAILABLE STYLES

DEEP BEAM

36"

915mm

42"

1067mm

48"

1220mm

51"

1295mm

54"

1371mm



FocusCast Character Deep Beam in a Mid Oak Finish - 54"

- Available in 5 length options
- 5 Wood colour options
- Optional down-lights can be fitted to Character Deep Beam (except 36")

5 1/2" | 140mm

5 1/2" | 140mm

STANDARD FASCIA BEAM

42"

1067mm

48"

1220mm

54"

1371mm



FocusCast Standard Fascia Beam in a Honey Oak Finish - 54"

- Available in 3 length options
- 5 Wood colour options

5 1/2" | 140mm

2 3/4" | 70mm

GREAT BEAM

54"

1371mm



FocusCast Great Beam in a Weathered Oak Finish

- Available in 54" only
- 5 Wood colour options
- Optional down-lights can be fitted to Character Great Beam

7 1/2" | 190mm

5 1/2" | 140mm

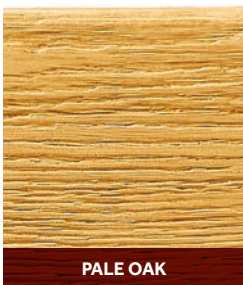
NOTE: Minimum clearances for non-combustible surrounds and beams:
250mm above the stove on a 5kW stove and 350mm on a 7kW stove.

FOCUSCAST
NON-COMBUSTIBLE
BEAMS

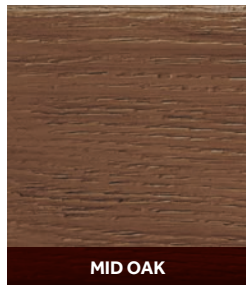
SMOOTH BEAM RANGE

Straight edges and fine grain marks
provide a modern aesthetic
to the smooth range of beams.

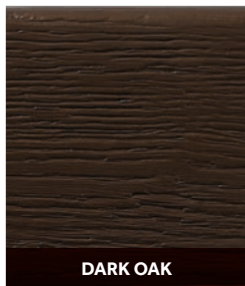
AVAILABLE COLOURS



PALE OAK



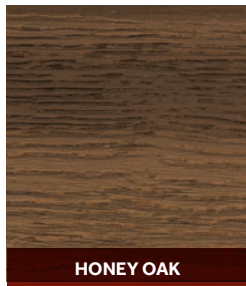
MID OAK



DARK OAK



WEATHERED OAK



HONEY OAK



▲ Above
FocusCast Deep Beam in a Smooth Pale Oak Finish

SMOOTH RANGE
AVAILABLE STYLES

DEEP BEAM



- Available in 4 length options
- 5 Wood colour options
- Optional down-lights can be fitted to Smooth Deep Beam

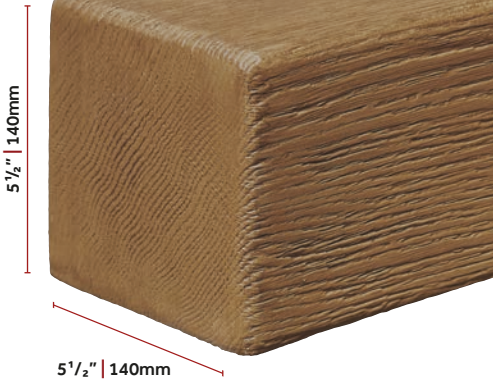
42"
1067mm

48"
1220mm

51"
1295mm

54"
1371mm

FocusCast Smooth Deep Beam in a Mid Oak Finish - 48"



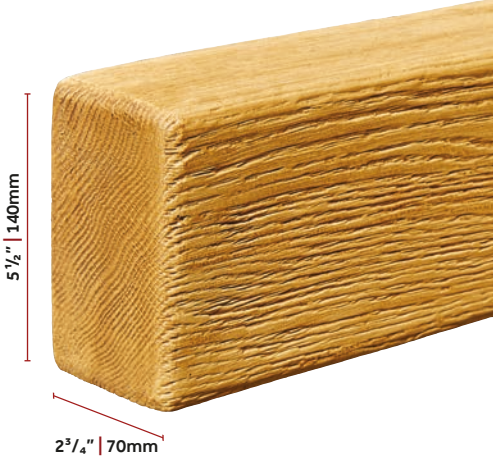
STANDARD FASCIA BEAM



- Available in 48" only
- 5 Wood colour options

48"
1220mm

FocusCast Smooth Standard Fascia Beam in a Pale Oak Finish - 48"



STANDARD SHELF



- Available in 2 length options
- 5 Wood colour options

48"
1220mm

54"
1371mm

FocusCast Smooth Standard Shelf in a Mid Oak Finish - 54"



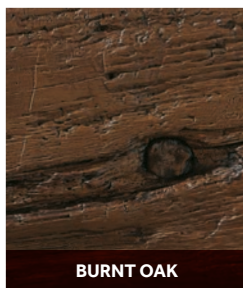
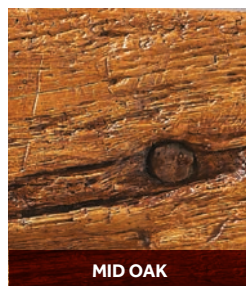
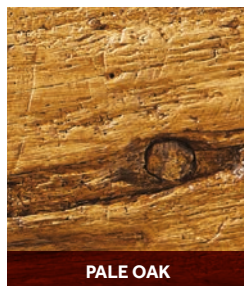
NOTE: Minimum clearances for non-combustible surrounds and beams:
250mm above the stove on a 5kW stove and 350mm on a 7kW stove.

FOCUSCAST
NON-COMBUSTIBLE
BEAMS

YORK LARGE FASCIA BEAM

An historic rafter has been utilised to craft an amazing large fascia beam with incredibly detailed unique features.

AVAILABLE COLOURS



▲ Above
FocusCast York Beam in a Honey Oak Finish

AVAILABLE SIZES

YORK LARGE FASCIA BEAM

48"
1220mm

54"
1371mm

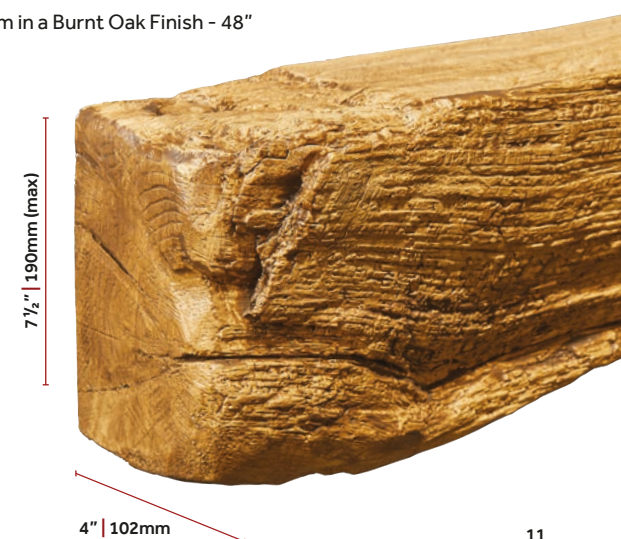


FocusCast York Beam in a Pale Oak Finish - 54"



FocusCast York Beam in a Burnt Oak Finish - 48"

- Available in 2 length options
- 5 Wood colour options



NOTE: Minimum clearances for non-combustible surrounds and beams:
250mm above the stove on a 5kW stove and 350mm on a 7kW stove.

FOCUSCAST
NON-COMBUSTIBLE
BEAMS



HERITAGE BEAM

An aged beam with deep grain pattern, this stunning new casting displays all the hallmarks of an ancient oak beam.

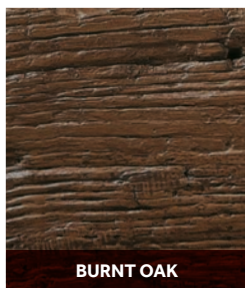
AVAILABLE COLOURS



PALE OAK



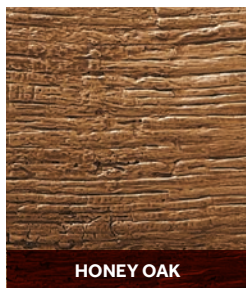
MID OAK



BURNT OAK



WEATHERED OAK



HONEY OAK



▲ Above
FocusCast Heritage Beam in a Mid Oak Finish

AVAILABLE SIZES

HERITAGE BEAM

48"
1220mm

54"
1371mm

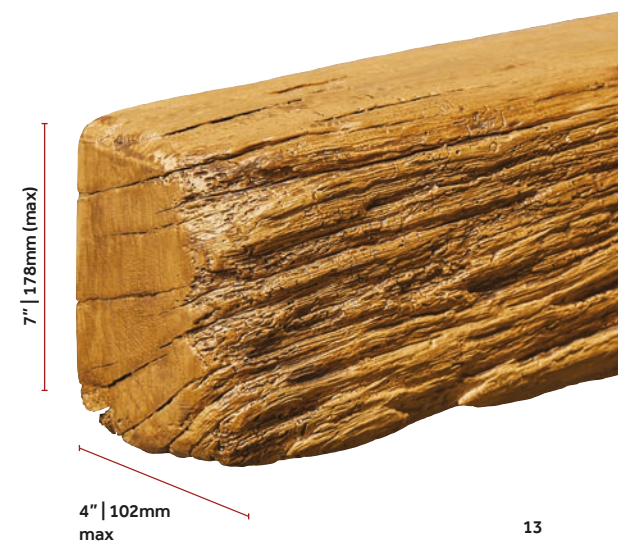


FocusCast Heritage Beam in a Mid Oak Finish - 54"



FocusCast Heritage Beam in a Honey Oak Finish - 54"

- Available in 2 length options
- 5 Wood colour options



NOTE: Minimum clearances for non-combustible surrounds and beams:
250mm above the stove on a 5kW stove and 350mm on a 7kW stove.

FOCUSCAST NON-COMBUSTIBLE BEAMS

VINTAGE BEAM

Moulded from an authentic beam with real heritage, the Vintage Beam and Shelf are highly realistic.

48"

1220mm

54"

1371mm



▲ Above - FocusCast Vintage Beam in Honey Oak - 54"



▲ Above - FocusCast Vintage Beam in Burnt Oak - 48"

5" | 127mm



4 1/2" | 115mm (max)

VINTAGE SHELF

48"

1220mm

54"

1371mm



▲ Above - FocusCast Vintage Shelf in Mid Oak - 54"



▲ Above - FocusCast Vintage Shelf in Burnt Oak - 48"

3 1/4" | 82mm



4 1/2" | 115mm (max)



▲ Above - FocusCast Vintage Beam in Honey Oak

AVAILABLE COLOURS



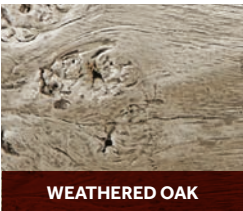
PALE OAK



MID OAK



BURNT OAK



WEATHERED OAK



HONEY OAK

NOTE: Minimum clearances for non-combustible surrounds and beams: 250mm above the stove on a 5kW stove and 350mm on a 7kW stove.

FOCUSCAST NON-COMBUSTIBLE BEAMS

PORTLAND STONE BEAM

Moulded from a genuine stone beam for an authentic appearance.

48"
1220mm

54"
1371mm



▼ Above & Left FocusCast Portland Stone Beam - 48"

7" | 178mm
3" | 76mm



RIVA DECORATIVE BEAM

A new decorative beam that features fine timber detailing in a stylised ribbed design.

48"
1220mm

54"
1371mm



▼ Above FocusCast Riva finished in a Parchment paint finish - 48"
Left FocusCast Riva finished in a Parchment paint finish - 54"

Riva can be finished in bespoke paints to match your decor or any of the FocusCast colours.

6 1/2" | 165mm
4" | 102mm



FOCUSCAST
NON-COMBUSTIBLE
SURROUND

JORVIK STOVE SURROUND

An historic rafter has been utilised to craft an amazing surround with incredibly detailed unique features.

JORVIK TOP BEAM OPTIONS

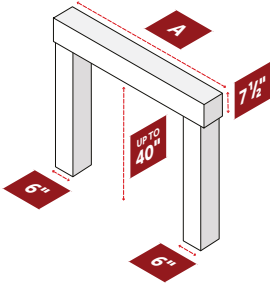
A Available with 48", 54" Top Beam (York Large Fascia Beam)



48" 1220mm	54" 1371mm
----------------------	----------------------

CUSTOM HEIGHT

The opening height of the Jorvik can be specified at the time of order (upto 40" max)



▲ ABOVE
FocusCast Jorvik Surround
in a Honey Oak Finish



FOCUSCAST
NON-COMBUSTIBLE
SURROUND

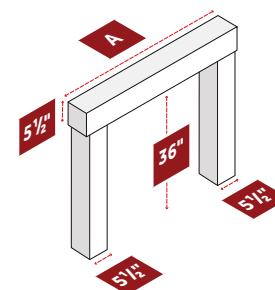
BEAMISH STOVE SURROUND

With distressed edges and a textured surface displaying the cracks, deep grain and knots of a characterful oak surround.

BEAMISH TOP BEAM OPTIONS

A Available with 42", 48", 51", 54" Top Beam (Character Deep Beam)

			
42"	48"	51"	54"
1067mm	1220mm	1295mm	1371mm



▲ Above FocusCast Beamish in a Pale Oak Finish

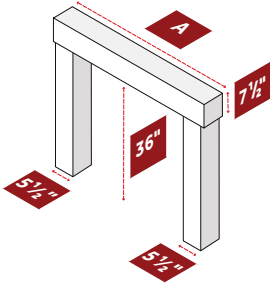
FOCUSCAST
NON-COMBUSTIBLE
SURROUND

GRANTHAM STOVE SURROUND

With distressed edges and a textured surface displaying the cracks, deep grain and knots of a characterful oak surround.

GRANTHAM TOP BEAM OPTIONS

A Available with 54" Top Beam (Character Great Beam)



HONEY OAK

WEATHERED OAK

DARK OAK

MID OAK

PALE OAK

▲ ABOVE
FocusCast Grantham Surround in a Weathered Oak Finish

FOCUSCAST
NON-COMBUSTIBLE
SURROUND

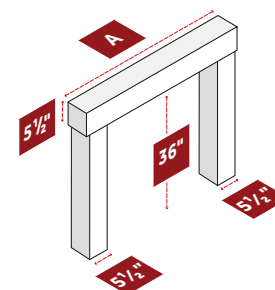
BARLBY STOVE SURROUND

Smooth straight edges and fine grain marks provide a modern aesthetic to this fire surround.

BARLBY TOP BEAM OPTIONS

A Available with 42", 48", 51", 54" Top Beam (Smooth Deep Beam)

BARLBY TOP BEAM OPTIONS			
42"	48"	51"	54"
1067mm	1220mm	1295mm	1371mm



▲ Above FocusCast Barlby in a Pale Oak Finish

Genuine timber aged & finished to match your style

The Beauty of Solid Oak



The majesty of a solid oak beam above a roaring stove is an image that many of us visualise when we imagine a warm, cosy room.

With unique natural features, each beam and shelf is truly one of a kind and can be shaped and coloured to suit your own personal tastes. We only use Sustainably sourced timber which is dried in the best possible way to provide the greatest stability in use.

FEATURES / OPTIONS



ADD PEGS
(OPTION)



ADD INDENTS
(OPTION)



EASY-FIX
INSTALL
RECOMMENDED
(OPTION)



SLOW ARCH
(OPTION) TO
STANDARD &
LARGE FASCIA
BEAMS ONLY



DOWN LIGHT
(OPTION) ON
HOLLOW
BEAMS

7 COLOURS

NATURAL
WAXED OAK



LIGHT/
MEDIUM OAK



MEDIUM
OAK



MEDIUM/
DARK OAK



EBONY
ON OAK



SILVERED
OAK



WARM
ANTIQUE



NOTE: There are Regulations that specify the minimum distance that a beam /shelf must be positioned above the stove. These measurements vary depending on the type and heat output of the selected stove.

Please refer to your stockist/installer for further information.

UP TO 3 METRES LONG

118" / 3000mm

42"
1067mm

48"
1220mm

54"
1371mm

42", 48" and 54" are standard sizes, but Beams and Shelves can be supplied at any length upto 3m

SURFACE TEXTURE & AGEING

ROUND EDGE

Round edges.

Smooth surface

Shown in a Medium Oak Finish

RUSTIC

Nibbled edges.

Smooth surface

Shown in a Natural Wax Finish

DRESSED

Heavily contoured.

Smooth surface

Shown in a Medium Oak Finish

AGED

Distressed edges.

Textured surface

Shown in a Light/Medium

Wax Finish

EXTREMELY AGED

Distressed edges and faces.

Textured surface

Shown in an Ebony Finish

ANCIENT

Looks very old

Shown in a Silvered Oak Finish

PRIME

Prime timber a clean, natural section of timber, no splits just smooth and is an option* on all products

*Except Great Beams, Great Shelves and Deep Beams. It is normally supplied with round edges.

▲ Above - Solid Oak Deep Beam in a Medium Waxed Finish

12 PROFILES TO CHOOSE FROM

Not available in Prime Timber



DEEP BEAM
5½ x 5½"
140 x 140mm



HOLLOW DEEP BEAM
5½ x 5½"
140 x 140mm

Not available in Prime Timber



GREAT BEAM
7½ x 5½"
190 x 140mm



LARGE HOLLOW BEAM
9 x 7"
229 x 178mm



HOLLOW BEAM
7 x 4"
178 x 102mm



STANDARD FASCIA BEAM
5½ x 2¾"
140 x 70mm



MEDIUM FASCIA BEAM
5½ x 3½"
140 x 89mm



LARGE FASCIA BEAM
7½ x 2¾"
190 x 70mm



STANDARD SHELF
2¾ x 5½"
70 x 140mm

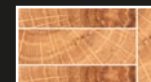


LARGE SHELF
2¾ x 7½"
70 x 190mm

Not available in Prime Timber



GREAT SHELF
5½ x 7½"
140 x 190mm



HOLLOW SHELF
4 x 7"
102 x 178mm

DEEP BEAM RANGE

2 PROFILES

Deep Beam

Deep Beams are cut from the heart of the oak log and therefore reveal lots of character including knots, splits and shakes. Every beam is unique. Skilful workmanship further enhances the beam with progressive levels of ageing (Round Edge, Rustic, Dressed, Aged, Extremely Aged or even Ancient). Each beam is then beautifully finished with your choice of colour.

Deep Beams are not available in Prime Timber

Hollow Deep Beam

Hollow Beams are fabricated to give the appearance of a Solid Beam. Their lighter construction is ideal where weight is an issue. They can be made to any size up to 3m. Hollow Beams are not available as Dressed, Extremely Aged or Ancient Oak.

COLOUR OPTIONS See Page 20 for swatches	NATURAL WAXED OAK	LIGHT / MEDIUM OAK	MEDIUM OAK	MEDIUM / DARK OAK	EBONY ON OAK	SILVERED OAK	WARM ANTIQUE
Deep Beam	✓	✓	✓	✓	✓	✓	✓
Hollow Deep Beam	✓	✓	✓	✓	✓	✓	✓

SURFACE TEXTURE & AGEING OPTIONS See Page 21 for swatches	ROUND EDGE	RUSTIC	DRESSED	AGED	EXTREMELY AGED	ANCIENT	PRIME	DOWN LIGHTS
Deep Beam	✓	✓	✓	✓	✓	✓	✗	✗
Hollow Deep Beam	✓	✓	✗	✓	✗	✗	✓	✓



▲ Above: Solid Oak Deep Beam, Aged Texture and in a Light Medium Wax Finish. Shown with Decorative Corner Trims.

AVAILABLE SIZES

DEEP BEAM



▲ Above: 54", Solid Oak Deep Beam, Dressed Texture and in a Medium Wax Finish.



▲ Above: 42", Solid Oak Deep Beam, Rustic Texture and in a Antique Wax Finish.

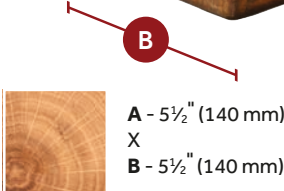
All Beams feature unique grain patterns, knots, splits and shakes (Except Prime).

HOLLOW DEEP BEAM



▲ Above: 48", Hollow Deep Beam, Prime and in a Light Medium Wax Finish.

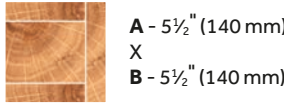
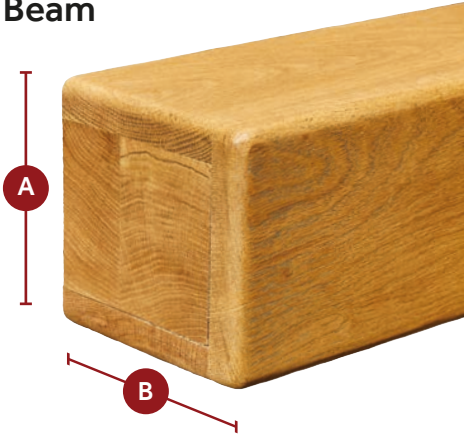
Deep Beam



A - 5½" (140 mm)
X
B - 5½" (140 mm)

Deep Beams are not available in Prime Timber

Hollow Deep Beam



A - 5½" (140 mm)
X
B - 5½" (140 mm)

Hollow Beams are not available as Dressed, Extremely Aged or Ancient Oak.

NOTE: There are Regulations that specify the minimum distance that a beam /shelf must be positioned above the stove. These measurements vary depending on the type and heat output of the selected stove. Please refer to your stockist/installer for further information.

LARGE BEAM RANGE

3 PROFILES

Great Beam

Great Beams are cut from the heart of the oak log and therefore reveal lots of character including knots, splits and shakes. Every beam is unique. Skilful workmanship further enhances the beam with progressive levels of ageing (Round Edge, Rustic, Dressed, Aged, Extremely Aged or even Ancient). Each beam is then beautifully finished with your choice of colour.

Great Beams are not available in Prime Timber

COLOUR OPTIONS See Page 20 for swatches	NATURAL WAXED OAK	LIGHT / MEDIUM OAK	MEDIUM OAK	MEDIUM / DARK OAK	EBONY ON OAK	SILVERED OAK	WARM ANTIQUE
Great Beam	✓	✓	✓	✓	✓	✓	✓
Large Hollow Beam	✓	✓	✓	✓	✓	✓	✓
Hollow Beam	✓	✓	✓	✓	✓	✓	✓

SURFACE TEXTURE & AGEING OPTIONS See Page 21 for swatches	ROUND EDGE	RUSTIC	DRESSED	AGED	EXTREMELY AGED	ANCIENT	PRIME	DOWN LIGHTS
Great Beam	✓	✓	✓	✓	✓	✓	✗	✗
Large Hollow Beam	✓	✓	✗	✓	✗	✗	✓	✓
Hollow Beam	✓	✓	✗	✓	✗	✗	✓	✓

Large Hollow Beam & Hollow Beam

Hollow Beams are fabricated to give the appearance of a Solid Beam. Their lighter construction is ideal where weight is an issue. They can be made to any size up to 3m. Hollow Beams are not available as Dressed, Extremely Aged or Ancient Oak.



▲ Above: Solid Oak Great Beam, Aged Texture and in a Light Medium Wax Finish. Shown with Decorative Corner Trims.

AVAILABLE SIZES



All Beams feature unique grain patterns, knots, splits and shakes (Except Prime).

GREAT BEAM



42"
1067mm

48"
1220mm

54"
1371mm

UP TO
3M

Above & Right : 54", Solid Oak Great Beam, Rustic Texture and in a Light Medium Wax Finish.

LARGE BEAMS | SOLID OAK

A



B

A - 7½" (190 mm)
X
B - 5½" (140 mm)
Deep Beams are not available in Prime Timber



LARGE HOLLOW BEAM



42"
1067mm

48"
1220mm

54"
1371mm

UP TO
3M

Above & Right: 54", Large Hollow Beam, Aged Texture and in a Medium Wax Finish.

A



B

A - 9" (229 mm)
X
B - 7" (178 mm)



HOLLOW BEAM



42"
1067mm

48"
1220mm

54"
1371mm

UP TO
3M

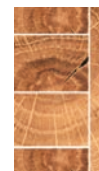
Above & Right: 48", Hollow Beam, Rustic Texture and in a Natural Wax Finish.

A



B

A - 7" (178)
X
B - 4" (102 mm)



NOTE: There are Regulations that specify the minimum distance that a beam /shelf must be positioned above the stove. These measurements vary depending on the type and heat output of the selected stove. Please refer to your stockist/installer for further information.

Hollow Beams are not available as dressed, extremely aged or ancient oak.

FASCIA BEAM RANGE

3 PROFILES

Standard Fascia Beam, Medium Fascia Beam & Large Fascia Beam

Fascia Beams are cut from the heart of the oak log and therefore reveal lots of character including knots, splits and shakes. Every beam is unique. Skilful workmanship further enhances the beam with progressive levels of ageing (Round Edge, Rustic, Dressed, Aged, Extremely Aged or even Ancient). Each beam is then beautifully finished with your choice of colour.

Medium Fascia Beams are not available in Prime Timber

COLOUR OPTIONS See Page 20 for swatches	NATURAL WAXED OAK	LIGHT / MEDIUM OAK	MEDIUM OAK	MEDIUM / DARK OAK	EBONY ON OAK	SILVERED OAK	WARM ANTIQUE
Standard Fascia Beam	✓	✓	✓	✓	✓	✓	✓
Medium Fascia Beam	✓	✓	✓	✓	✓	✓	✓
Large Fascia Beam	✓	✓	✓	✓	✓	✓	✓

SURFACE TEXTURE & AGEING OPTIONS See Page 21 for swatches	ROUND EDGE	RUSTIC	DRESSED	AGED	EXTREMELY AGED	ANCIENT	PRIME
Standard Fascia Beam	✓	✓	✓	✓	✓	✓	✓
Medium Fascia Beam	✓	✓	✓	✓	✓	✓	✗
Large Fascia Beam	✓	✓	✓	✓	✓	✓	✓



▲ Above : 54", Medium Fascia Beam, Aged Texture in a Medium Wax Finish.
Shown with Decorative Corner Trims.

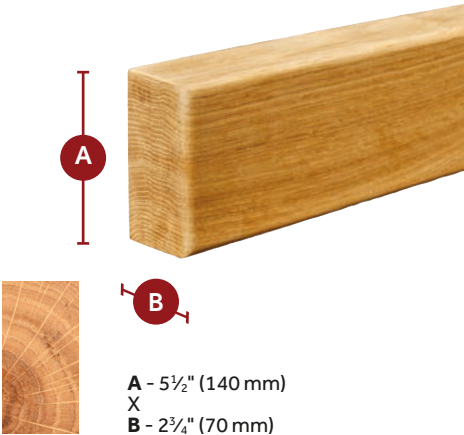
AVAILABLE SIZES

STANDARD FASCIA BEAM



42" 1067mm	48" 1220mm	54" 1371mm	UP TO 3M
----------------------	----------------------	----------------------	---------------------------

Above & Right: 54", Standard Fascia Beam in a Light Medium Wax Finish.

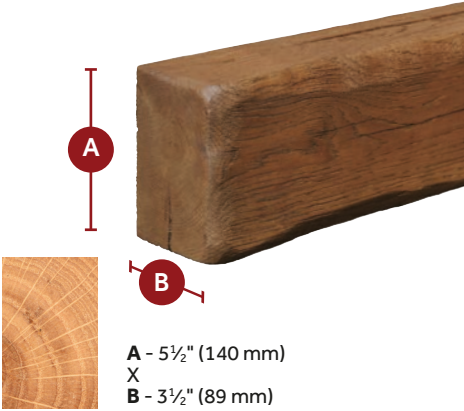


MEDIUM FASCIA BEAM



42" 1067mm	48" 1220mm	54" 1371mm	UP TO 3M
----------------------	----------------------	----------------------	---------------------------

Above & Right: 54", Medium Fascia Beam, Aged Texture in a Medium Wax Finish.

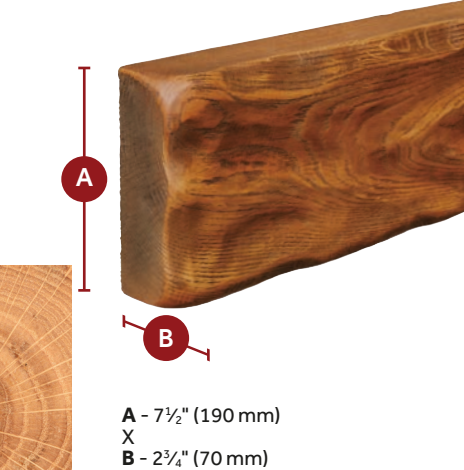


LARGE FASCIA BEAM



42" 1067mm	48" 1220mm	54" 1371mm	UP TO 3M
----------------------	----------------------	----------------------	---------------------------

Above & Right: 54", Large Fascia Beam, Rustic Texture and in a Warm Antique Finish.



All Beams feature unique grain patterns, knots, splits and shakes (Except Prime).

NOTE: There are Regulations that specify the minimum distance that a beam /shelf must be positioned above the stove. These measurements vary depending on the type and heat output of the selected stove. Please refer to your stockist/installer for further information.

SHELF RANGE



All Shelves feature unique grain patterns, knots, splits and shakes (Except Prime).

COLOUR OPTIONS See Page 20 for swatches	NATURAL WAXED OAK	LIGHT / MEDIUM OAK	MEDIUM OAK	MEDIUM / DARK OAK	EBONY ON OAK	SILVERED OAK	WARM ANTIQUE
Standard Shelf	✓	✓	✓	✓	✓	✓	✓
Large Shelf	✓	✓	✓	✓	✓	✓	✓
Great Shelf	✓	✓	✓	✓	✓	✓	✓
Hollow Shelf	✓	✓	✓	✓	✓	✓	✓

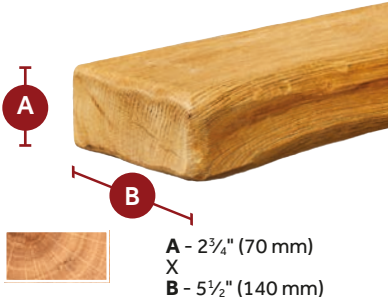
SURFACE TEXTURE & AGEING OPTIONS See Page 21 for swatches	ROUND EDGE	RUSTIC	DRESSED	AGED	EXTREMELY AGED	ANCIENT	PRIME	
Standard Shelf	✓	✓	✓	✓	✓	✓	✓	✗
Large Shelf	✓	✓	✓	✓	✓	✓	✓	✗
Great Shelf	✓	✓	✓	✓	✓	✓	✗	✗
Hollow Shelf	✓	✓	✗	✓	✗	✗	✓	✓

STANDARD SHELF

42" 1067mm 48" 1220mm 54" 1371mm UP TO 3M



Above & Right: 48", Solid Oak Standard Shelf, Rustic Texture and in a Light Medium Wax Finish.



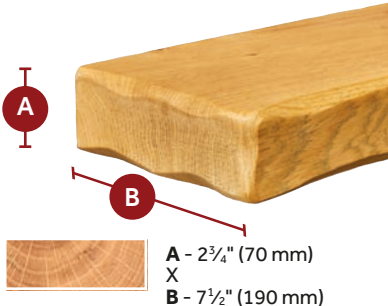
A - 2 3/4" (70 mm)
X
B - 5 1/2" (140 mm)

LARGE SHELF

42" 1067mm 48" 1220mm 54" 1371mm UP TO 3M



Above & Right: 48", Solid Oak Large Shelf, Rustic Texture and in a Light Medium Wax Finish.



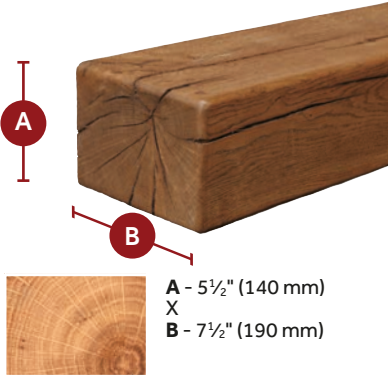
A - 2 3/4" (70 mm)
X
B - 7 1/2" (190 mm)

GREAT SHELF

42" 1067mm 48" 1220mm 54" 1371mm UP TO 3M



Above & Right: 54", Solid Oak Great Shelf, Round Edge Texture and in a Medium Wax Finish.



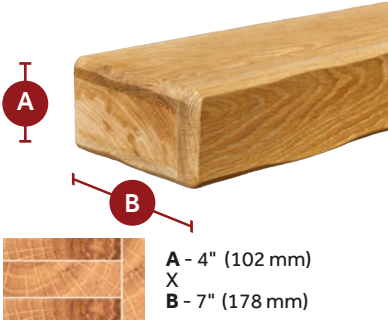
A - 5 1/2" (140 mm)
X
B - 7 1/2" (190 mm)

HOLLOW SHELF

42" 1067mm 48" 1220mm 54" 1371mm UP TO 3M



Above & Right: 54", Solid Oak Hollow Shelf, Rustic Texture and in a Wax Finish.



A - 4" (102 mm)
X
B - 7" (178 mm)

NOTE: There are Regulations that specify the minimum distance that a beam /shelf must be positioned above the stove. These measurements vary depending on the type and heat output of the selected stove. Please refer to your stockist/installer for further information.

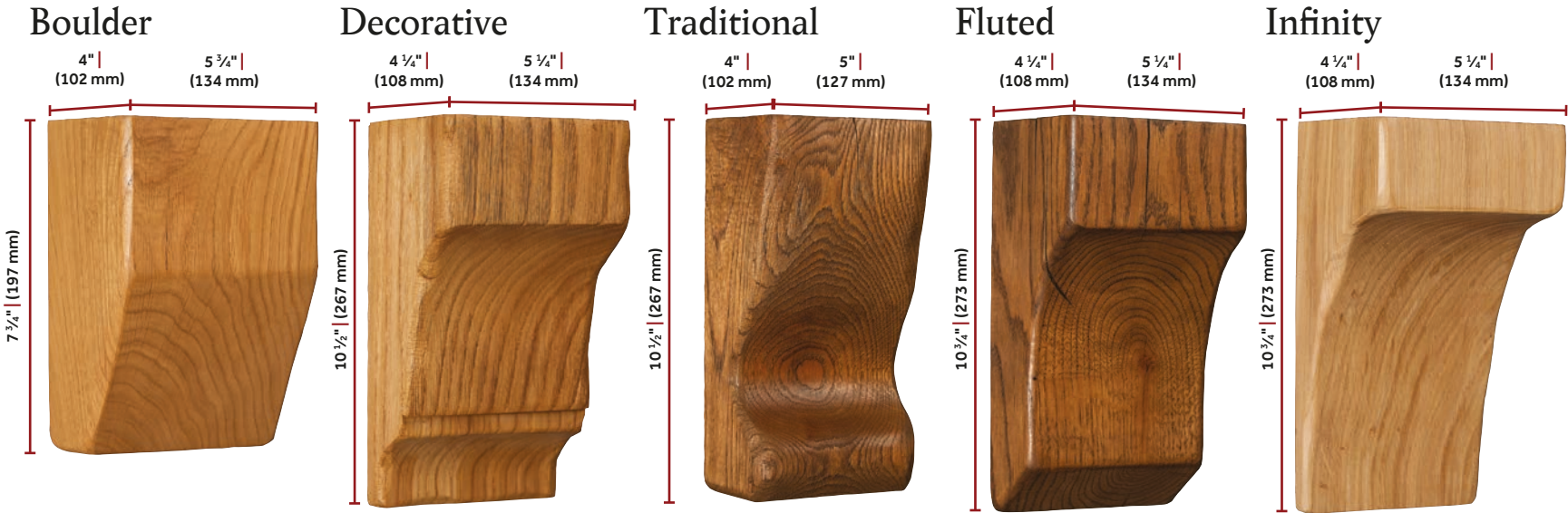
SOLID OAK

CORBELS

Choose from Five different styles to complement your solid oak beam



Corbels feature unique grain patterns, knots, splits and shakes (Except Prime).



Above: Boulder Corbel, Round Edge Texture and in a Light / Medium Wax Finish. Above: Decorative Corbel, Aged Texture and in a Light / Medium Wax Finish. Above: Traditional Corbel, Aged Texture and in a Medium Wax Finish. Above: Fluted Corbel, Rustic Texture and in a Medium Wax Finish. Above: Infinity Corbel, Rustic Texture and in a Wax Finish.

DECORATIVE SHELVES

These attractive shelves will enhance any stove installation and can be ordered in a wide variety of timbers and finishes. As every one is hand-made they can be manufactured to your specific size and colour.

OPTIONS	48" STANDARD SIZE	51" STANDARD SIZE	54" STANDARD SIZE	PRIME OAK	PINE	PAINTED MDF	OAK & PAINTED MDF
Plain Corbel	✗	✓	✗	✓	✓	✓	✗
Mallaig Shelf	✓	✗	✓	✓	✗	✓	✗
Canterbury Shelf	✓	✗	✓	✓	✗	✓	✗
Corby Shelf	✗	✓	✗	✗	✗	✓	✓

PLAIN CORBEL



Standard Waxed Pine

CORBY SHELF



Antique White with Prime Oak Mantel in a Natural Waxed Finish

CANTERBURY SHELF



Waxed Oak

MALLAIG SHELF



Waxed Oak

STOVE SURROUNDS

Focus make Stove Surrounds to meet your individual style & taste.

From Textured Finishes to Prime Oak & Pine, our timber surrounds can be supplied in a variety of wood tones. You can also specify a painted finish on some of the range, either colour-matched or in one of our popular standard paint colours.

	Standard Paint Finishes on MDF	Premium Colour Matched Paint Finishes on MDF	Solid Oak	Textured Oak	Canadian Pine
Barkston				✓	
Barlby				✓	
Beamish				✓	
Leicester	✓	✓	✓		
Lichfield	✓	✓	✓		
Plain Corbel	✓	✓	✓		✓
Gatsby				✓	
Blaydon				✓	
Montreal	✓	✓	✓		
Sutton	✓	✓	✓	✓	

SOLID OAK FINISHES

	
WAXED OAK	LIGHT OAK
	
LIGHT / MEDIUM OAK	MEDIUM OAK
	
MEDIUM/ DARK OAK	DARK OAK

					
ROUND EDGE Round edges, Smooth surface	DRESSED Heavily contoured. Smooth surface	EXTREMELY AGED Distressed edges and faces. Textured surface	RUSTIC Nibbled edges. Smooth surface	AGED Distressed edges. Textured surface	ANCIENT Looks very old

PAINT FINISHES

					
WHITE	ANTIQUE WHITE	WARM GREY	MID GREY	OATMEAL	LIMESTONE
					
PARCHMENT	SOFT CREAM	PEARL GREY	STEEL GREY	VENETIAN GREY	MIDNIGHT

SOLID OAK STOVE SURROUND BEAMISH



▲ ABOVE
Aged oak Beamish finished in medium wax

The Beamish is supplied in three pieces.

*Rebate no deeper than 3" deep. Up to 2" into leg and top for slips can be added. Supplied with key-hole fittings as standard, an Easy-fix bracket can be added to the Mantel Beam as an optional extra.

A version of the Beamish is also available in our Non-combustible range.

	METRIC mm	IMPERIAL inch
Mantel	1295	51
Mantel Depth	140	5 1/2
Surround Height	1054	41 1/2
Opening Height	915	36
Opening Width	915	36
Width at Base	1193	47
Rebate	76/50*	3/2*

SOLID OAK
STOVE SURROUND

BARLBY



▲ ABOVE
Rustic oak Barlby finished in light
/ medium wax

** Rebate up to 2" (50mm) Deep & 2" (50mm) into the
leg and top can be added.*

*The Barlby is supplied in three pieces. Supplied with
key-hole fittings as standard, an Easy-fix bracket can
be added to the Mantel Beam as an optional extra.*

*A version of the Barlby is also available in our
Non-combustible range.*

	METRIC mm	IMPERIAL inch
Mantel	1295	51
Mantel Depth	140	5 1/2
Surround Height	1054	41 1/2
Opening Height	915	36
Opening Width	915	36
Width at Base	1193	47
Rebate	50*	2*

SOLID OAK
STOVE SURROUND

BARKSTON



▲ ABOVE
Aged oak Barkston finished in
medium wax

	METRIC mm	IMPERIAL inch
Mantel	1320	52
Mantel Depth	127	5
Surround Height	1085	42 3/4
Opening Height	915	36
Opening Width	915	36
Width at Base	1168	46

PAINTED
STOVE SURROUND

LEICESTER



▲ ABOVE
Leicester finished in white

See page 30 for colour options

* Rebate up to 3" (76mm) Deep & 1 1/8" (28mm) into the leg and top can be added

	METRIC mm	IMPERIAL inch
Mantel	1270	50
Mantel depth	110	4 1/4
Surround height	1130	44 1/2
Opening height	915	36
Opening width	889	35
Width at base	1182	46 1/2
Rebate*	76 / 28	3 / 1 1/8

PAINTED
STOVE SURROUND

LICHFIELD



▲ ABOVE
Lichfield finished in white

See page 30 for colour options

* Rebate up to 3" (76mm) Deep & 1 1/8" (28mm) into the leg and top can be added

	METRIC mm	IMPERIAL inch
Mantel	1320	52
Mantel depth	127	5
Surround height	1150	45 3/4
Opening height	915	36
Opening width	889	35
Width at base	1220	48
Rebate*	76 / 28	3 / 1 1/8

SOLID OAK
STOVE SURROUND

SUTTON



▲ ABOVE
Aged oak Sutton finished in medium
wax with optional downlights

See page 30 for colour
& texture options

	METRIC mm	IMPERIAL inch
Mantel	1220	48
Mantel Depth	135	5 3/8
Surround Height	1080	42 1/2
Opening Height	889	35
Opening Width	889	35
Width at Base	1220	48
Rebate	76 / 28	3 / 1 1/8

SOLID OAK
STOVE SURROUND

BLAYDON



▲ ABOVE
Aged oak Blaydon finished in medium wax

See page 30 for colour & texture options
The Blaydon is supplied in 3 pieces

	METRIC mm	IMPERIAL inch
Mantel	1295	51
Mantel Depth	140	5 1/2
Surround Height	985	38 3/4
Opening Height	915	36
Opening Width	915	36
Width at Base	1193	47
Rebate	0	0

SOLID OAK
STOVE SURROUND

GATSBY



▲ ABOVE
Aged oak Gatsby finished in dark wax

The Gatsby is supplied in three pieces.
** Gatsby - Rebate no deeper than 1" deep. Up to 2" into leg and top for slips can be added. Supplied with key-hole fittings as standard, an Easy-fix bracket can be added to the Mantel Beam as an optional extra.*

See page 30 for colour
& texture options

	METRIC mm	IMPERIAL inch
Mantel	1371	54
Mantel depth	140	5 1/2
Surround height	1104	43 1/2
Opening height	915	36
Opening width	915	36
Width at base	1270	50
Rebate*	25 / 50	1 / 2

SOLID OAK
STOVE SURROUND

PLAIN CORBEL



▲ ABOVE
Plain Corbel finished in antique waxed pine

See page 30 for colour
& texture options

	METRIC mm	IMPERIAL inch
Mantel	1295	51
Mantel Depth	228	9
Surround Height	1133	44 5/8
Opening Height	915	36
Opening Width	889	35
Width at Base	1206	47 1/2
Rebate	28	1 1/8
Removable To	76	3

SOLID OAK
STOVE SURROUND

MONTREAL



◀ LEFT
Montreal finished in light medium waxed oak

	METRIC mm	IMPERIAL inch
Mantel	1370	54
Mantel Depth	228	9
Surround Height	1162	45 3/4
Opening Height	889	35
Opening Width	889	35
Width at Base	1270	50
Rebate	28	1 1/8
Removable To	76	3

See page 30 for colour
& texture options

FIXING SYSTEMS

FOCUS EASY-FIX

Supplied as standard with all FocusCast Beams & FocusCast Surrounds. Optional extra on oak beams and shelves, as well as selected stove surrounds.



Nothing can be easier than an Easy-fix!!

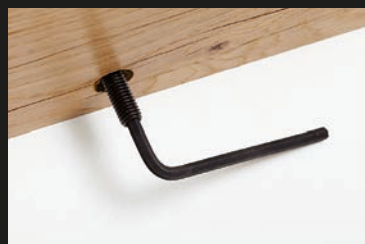
The Focus Easy-fix system is a substantial bracket designed to simplify the fitting of the heavier beams and shelves. It comes supplied with plugs and screws.

Once the beam is in place, it is easily secured from underneath with a few turns of an Allen Key.



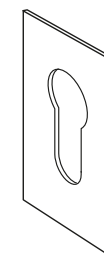
Focus Easy-fix Bracket

If the Easy-fix system is not specified on Oak products we supply three M10 x 300mm threaded metal bars that screw into pre-drilled holes in the back of the beam. Consult with your Installer for more information.

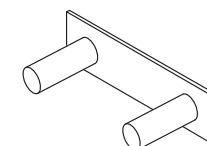


FIXING SYSTEMS

OAK FASCIA BEAMS



Oak Fascia Beams are supplied with two metal plate keyholes inserted in the back. These come complete with plugs and screws.



Alternatively there is an 850mm Easy-fix system designed for Oak Fascia Beams. (We recommend discussing fixings with your installer).

DECORATIVE HEAT SHIELDS

FOR SOLID OAK DEEP BEAMS & GREAT BEAMS

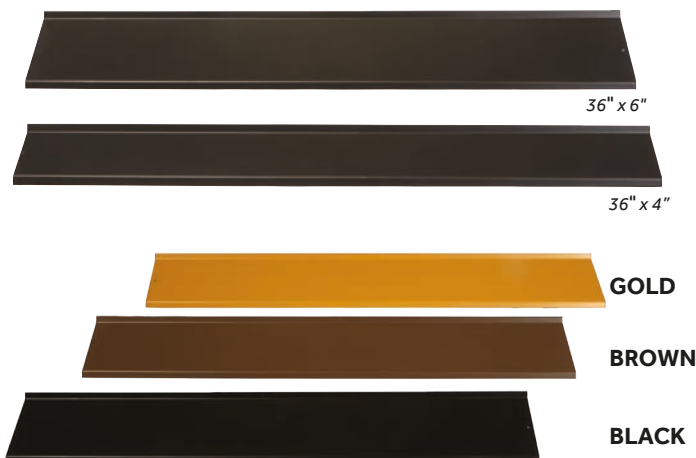
A decorative panel that can be added to Deep Beams and Great Beams giving a stylish finishing touch to your installation.



▲ ABOVE Decorative Heat Shield illustrated in Gold

AVAILABLE LENGTHS:
36" x 4" & 36" x 6"

NOTE: There are Regulations that specify the minimum distance that a beam /shelf must be positioned above the stove. These measurements vary depending on the type and heat output of the selected stove. Please refer to your stockist/installer for further information.



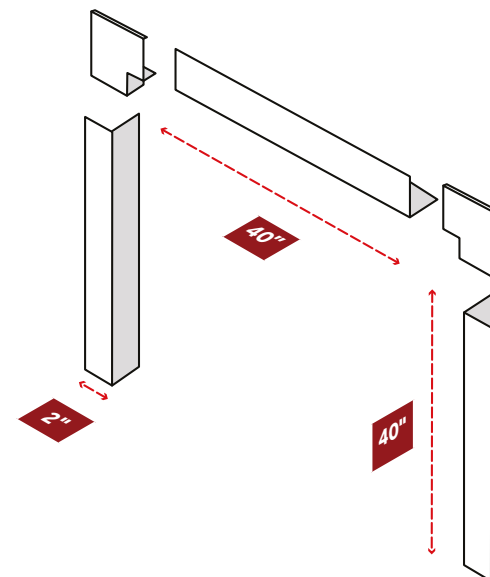
DECORATIVE CORNER TRIMS

A neat, effective way to create a clean edge to your chamber installation.



AVAILABLE LENGTH:
40" x 2" x 2"

Decorative corner trims are now supplied as a three piece set as standard and can also be specified as a two piece set on request.



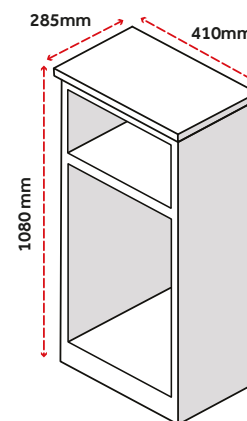
LOOKING FOR SOMETHING DIFFERENT?



We also have a full range
of Fire Surrounds
and Electric Suites.

Ask your retailer / stockist for a copy of our latest brochure.

LOG CABINETS



Beautifully designed, our sturdy log
cabinets are the perfect accompaniment to
match your stove surround.

Built from either Solid Oak or painted MDF with a solid
oak top, both feature a durable backboard to protect
against damage.

See page 30 for colour & texture options

SOLID OAK

BEAM COVERS



Above: Beam Cover and Spars in Rustic Oak in a Light/Medium Finish

Create a superb ambience in your room with our authentic timber beams.

They are ideal where a steel beam needs to be covered as they can be made to almost any length and dimension and finished to match your internal decoration.





FOCUS FIREPLACES LIMITED

Unit 27 The Bull Commercial Centre, Stockton-on-Forest, York YO32 9LE

Tel: 01904 400109

email: sales@focusfireplaces.co.uk

www.focusfireplaces.co.uk



At Focus Fireplaces we are continually updating and improving our products. We reserve the right to alter designs, dimensions and specifications of our products without notice.

All sizes are approximate. Brochure colours may vary from the actual product due to the photographic and printing processes and the variations in finishing.

© Focus Fireplaces Manufacturing 2025 - Issue 01-25